

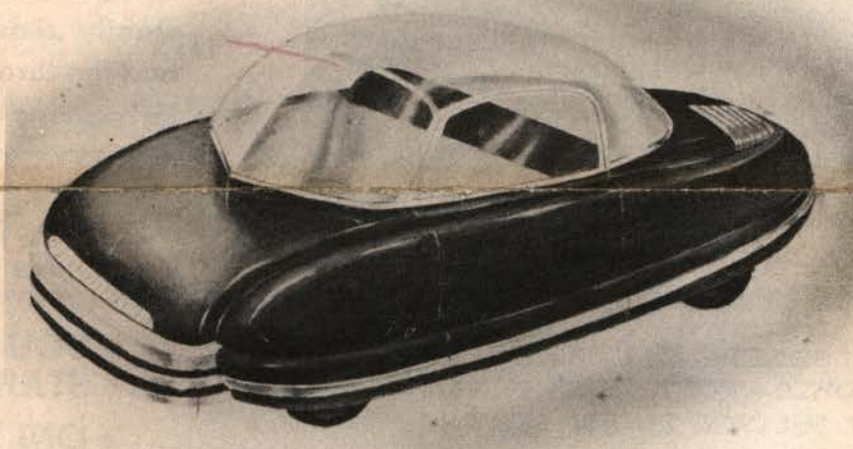
Presenting...

THE PERRYMOBILE

World's Only "Liquid & Air" Car

It has...

- Low fire hazard
- Low insurance rate
- Lowest fuel consumption
- Full motor braking
- Highest safety factors
- Finger-tip control



It has No...

- Clutch
- Gearshift
- Transmission
- Carburetor
- Starter
- Sparkplugs
- Wires
- Ignition or Cooling systems
- Complicated parts

THE ONLY CAR THAT STORES POWER WHILE COASTING

The car that

- Runs on liquid & air
- Is ration-free
- Uses Diesel oil or butane to heat the liquid & air
- A child can drive safely

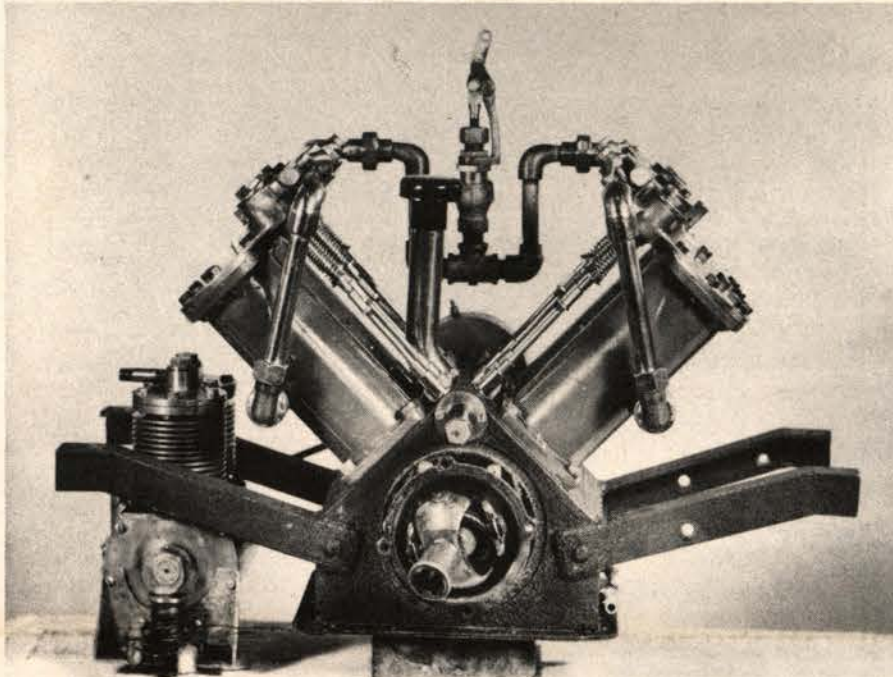
The motor that

- Makes no sound at any speed
- Has no dangerous exhaust fumes
- Gives full horsepower at one mile an hour
- Will run 60 miles on a gallon of low-grade fuel

"STEP ON THE AIR—INSTEAD OF THE GAS!"

THE CAR OF TOMORROW - TODAY!

WHAT ARE YOU DRIVING TODAY?



The above photo shows the Perry engine, front view, with belt-driven air compressor.

Will Your Present Car
Last Until the "Postwar"
Car Is Here?

The answer is probably not, unless you give it careful nursing, frequent and costly overhauls—and there is the constantly reduced gasoline allowance, and the threat of an even closer ration for years to come.

*Wouldn't you like
to own a car with
None of these worries?*

... a car
that actually runs
on liquid & air!

This "Postwar" Car
May Be Yours With a
Minimum of Cost and Effort!

Frank R. Perry of Los Angeles, inventor of this amazing powerplant, built his car during the past five years, believing that some form of power must eventually take the place of gasoline. Air power, far from new, has been used for many years to drive industrial machines and tools.

AIR, LIKE STEAM, IS PRESSURE GRADUALLY APPLIED—SMOOTH, STEADY POWER—NOT A SERIES OF VIOLENT EXPLOSIONS AS IS THE CASE IN THE PRESENT-DAY MOTORCAR ENGINE.

Air power is quiet and extremely clean. Perry's motor is a four-cylinder V-type "L" head (3-3/16 x 4-1/4 bore and stroke), using stock crankshaft, connecting rods, pistons and valves. Simple in construction, and weighing only 65 pounds, it nevertheless develops enormous horsepower per pound of engine weight. The cylinders are seamless tubing.

• NO FIRE OCCURS IN THE PERRY ENGINE

The fuel—it may be anything that burns—is employed only to heat and thus expand the air and liquid in the heater (under hood) before it enters motor.

• YOU DRIVE AWAY FROM A COLD START IN A FEW SECONDS

• ONLY ONE OPERATION TO DRIVING—A HAND THROTTLE UNDER STEERING WHEEL

• ONE PEDAL IN FLOOR—THE BRAKE

• SINCE NO TRANSMISSION IS USED, MOTOR IS SIMPLY REVERSED TO BACK UP

• NO CARBON EVER FORMS—HENCE NO VALVES TO GRIND

• MOTOR HEAT NEVER EXCEEDS 200 DEGREES FAHRENHEIT—THUS OIL IN CRANKCASE REMAINS PURE ALMOST INDEFINITELY

• MOTOR EFFICIENCY NOT AFFECTED BY HIGH ALTITUDES, TROPIC OR FRIGID TEMPERATURES

• NO LIQUIDS IN THE PERRY ENGINE WILL FREEZE AT LESS THAN 30 DEGREES FAHRENHEIT BELOW ZERO.

SEE
NEXT
PAGE

WHY CARRY EXCESS WEIGHT?

... IT ONLY MEANS MORE FUEL CONSUMPTION AND GETS YOU NO EXTRA SPEED OR POWER.

Did you know...

THAT THE AVERAGE CAR, TRAVELING AT 35 MILES AN HOUR, USES ONLY ABOUT 8 TO 12 HORSEPOWER?

Terrifically high engine speeds—which wear out the internal combustion engine—do not occur in the Perry engine.

AT 40 MILES AN HOUR, THE PERRY MOTOR TURNS UP ONLY 800 REVOLUTIONS A MINUTE! YOUR CAR AT THAT SPEED IS TURNING 2000 OR MORE REVS!

THE PERRY MOTOR IS NOT LIMITED TO PLEASURE CARS. It may be successfully used in any vehicle: TRUCK... BOAT... FARM MACHINE... or as a STATIONARY POWERPLANT. Silent, clean, economical, and with practically no fire hazard, it is the ultimate in cheap, comfortable power with absolute safety.

*Full Power at Any Speed
that's liquid & air power!*

You must build up getaway power in the gas car by several gear-shiftings until you get "rolling." This means heavy fuel consumption while the engine races at tremendous speed in the lower gears. This is not necessary with the Perry motor.

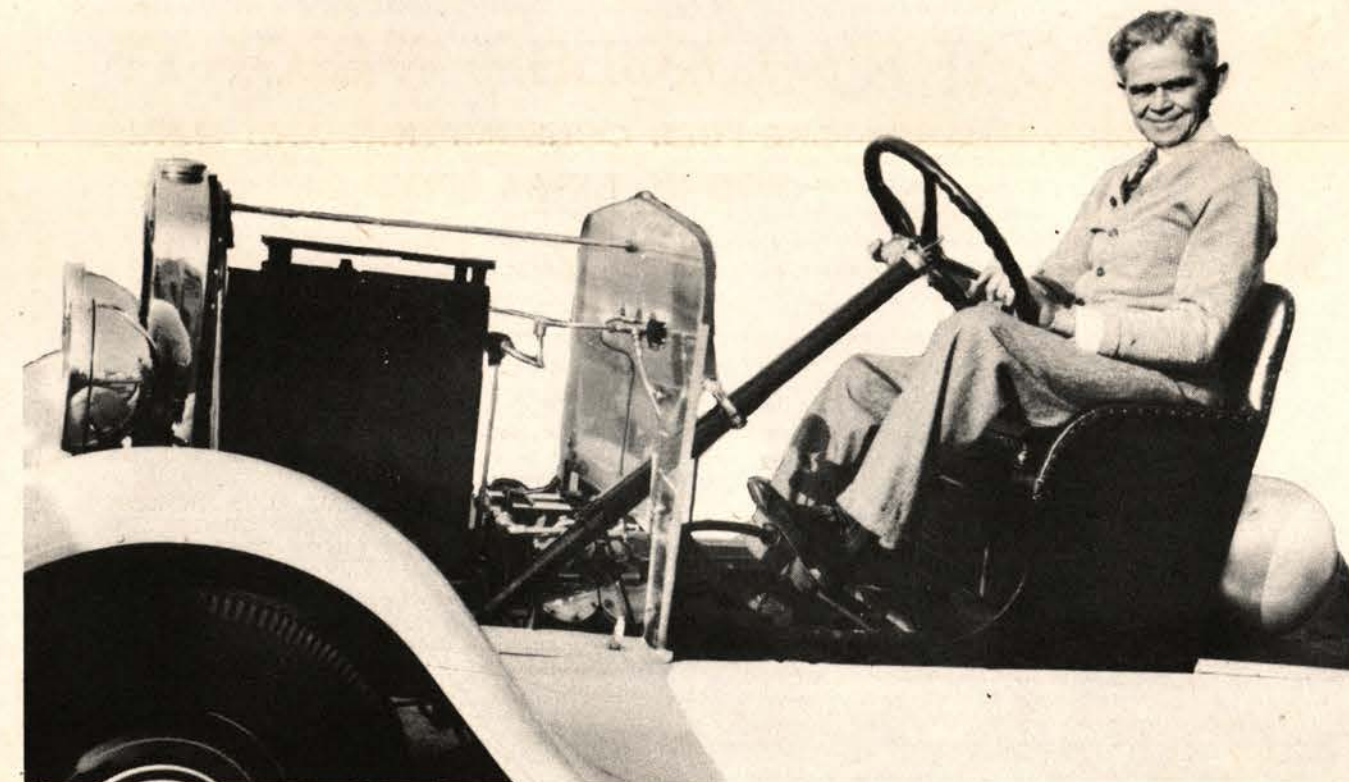
YOU START OFF WITH ALL YOUR "HORSES" WORKING. YOU DON'T DEPEND UPON MOMENTUM FOR SPEED OR POWER TO "TAKE" THE HILLS.

Try this test in your own car: Drive up against a stone wall, leave the car in gear with the throttle open. What happens? You stop! Try it in the Perrymobile. The drive wheels will continue to revolve, while the tread rips from the tires.

AS LONG AS THE THROTTLE IS OPEN—SOMETHING HAS TO MOVE!

The Perry Powerplant

embodies only TWO UNITS—the motor and heater. The photo, at right, shows these two units mounted in a stock automobile chassis, with Inventor Perry behind the wheel. (Photo on cover is a postwar Perrymobile.) The weight of the Perry power plant (two units) is approximately 150 pounds. Compare this with the 1000 to 1800 pound powerplant necessary in the average gas car. Extreme weight, contrary to popular opinion, is not essential to speed or power. "Midget" racers weigh only about 700 pounds, yet travel at 120 or more miles per hour. The average medium priced car weighs overall about 3000 pounds and is intended for a maximum of six passengers. Yet makers of these cars install the identical motor in their five-ton trucks!



Now

YOU MAY OWN A PERRYMOBILE!

The recently organized Perry-Brauer Motor Company of Los Angeles, California, has pledged itself to make these powerplants available to the masses. The Perry-Brauer Motor Company does not intend building the motors and offering them for sale. Instead, they have hit upon a unique plan.

BUILD IT YOURSELF - OR HAVE IT BUILT

The Perry-Brauer Motor Company will sell you a set of easily understood blueprints and specifications from which any machinist or good auto mechanic may build the complete powerplant at nominal cost, since many standard parts, which may be purchased at regular Auto Parts Dealers anywhere, are used. All you need is an old auto chassis; any make will do—in which to install the finished Perry powerplant.

USE THIS FORM WHEN APPLYING For License, Blueprints and Specifications

To Perry-Brauer Motor Co.,
663 W. Jefferson Street,
Los Angeles 7, California.

Gentlemen:

I enclose herewith \$25.00 (Money Order or Cashier's Check), payable to Perry-Brauer Motor Co., for which please send me one set of blueprints and specifications for the construction of a Perry Powerplant and grant me a non-exclusive, non-transferable license to make and use said powerplant.

I warrant that this set of blueprints and specifications is for my own use and will not be transferred by me to anyone else, and I will not build or allow anyone else to build any powerplant or powerplants from these blueprints and specifications except the powerplant which I expect to build or have built for myself, and that if I sell said powerplant, installed or not installed, I will not build or construct another powerplant from the same plans and specifications without first having your consent so to do in writing and paying you \$25.00 for each additional powerplant so constructed.

If the applicant is a minor (under 21 years of age), parents or guardian must sign application.

It is understood that the blueprints and specifications call for the same kind of powerplant as the one which has been constructed by Frank R. Perry, and that no other representation is made by seller.

PLEASE PRINT NAME

STREET OR R. F. D. NUMBER

CITY, STATE OR FOREIGN COUNTRY