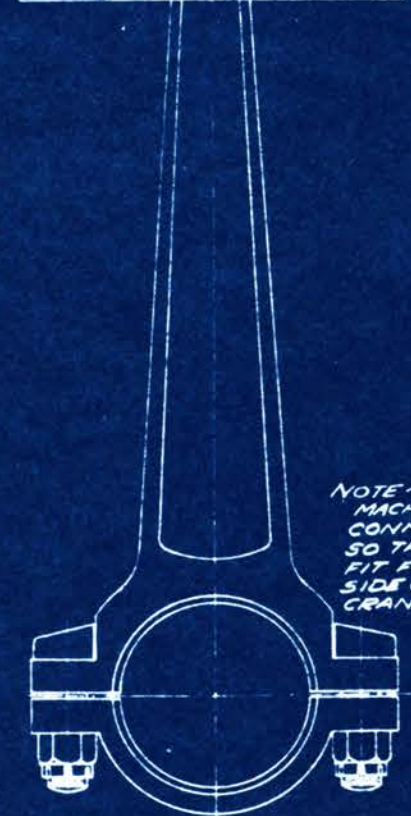
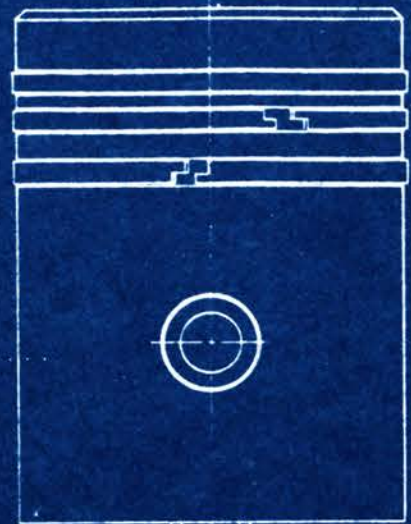


PERRY-BRAUER MOTOR CO.  
 452 W. JEFFERSON BLDG.  
 LOS ANGELES 7, CALIFORNIA  
 SECTIONAL ASSEMBLY  
 DATE 6-22-45  
 DRAWN BY: F.K. JONG NO. A-1

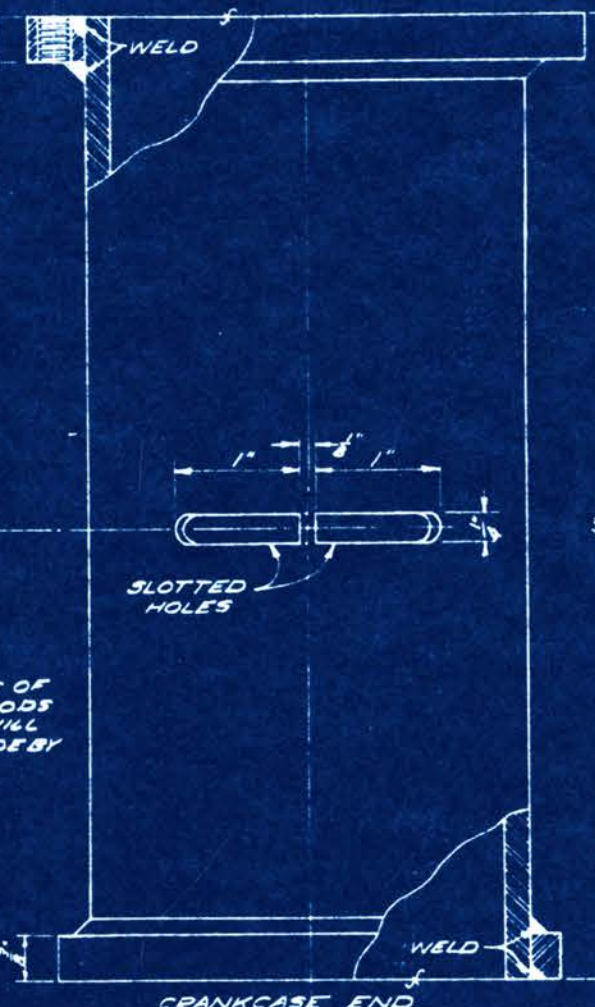
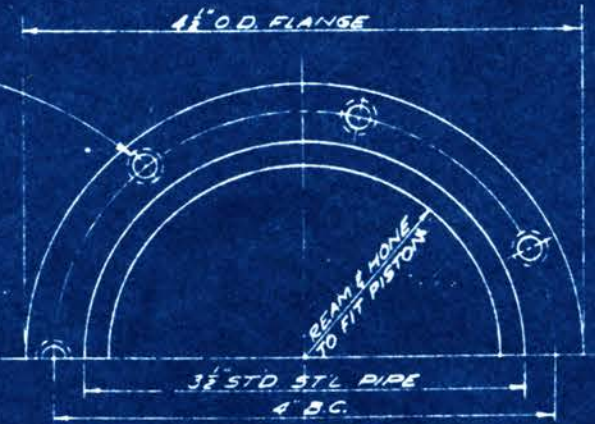
COPYRIGHT 1945 BY  
 PERRY-BRAUER MOTOR CO.

DRILL & TAP 7 HOLES  
 $\frac{3}{16}$ " U.S. THDS EQUALLY  
 SPACED ON 4" B.C.



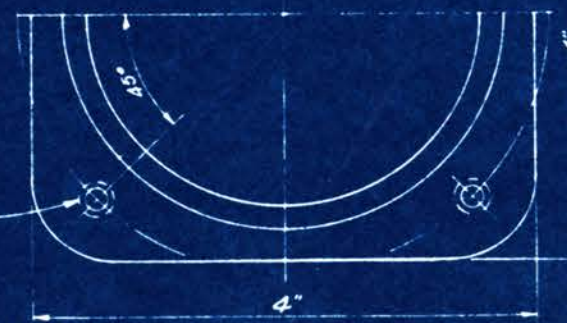
PISTON, PISTON RINGS &  
 CONNECTING ROD  
 4-REQ'D.  
 ST'D. MODEL "A" FORD PARTS

NOTE ~  
 MACHINE SIDES OF  
 CONNECTING RODS  
 SO THAT TWO WILL  
 FIT FREELY SIDE BY  
 SIDE ON THE  
 CRANKSHAFT.



CRANKCASE END

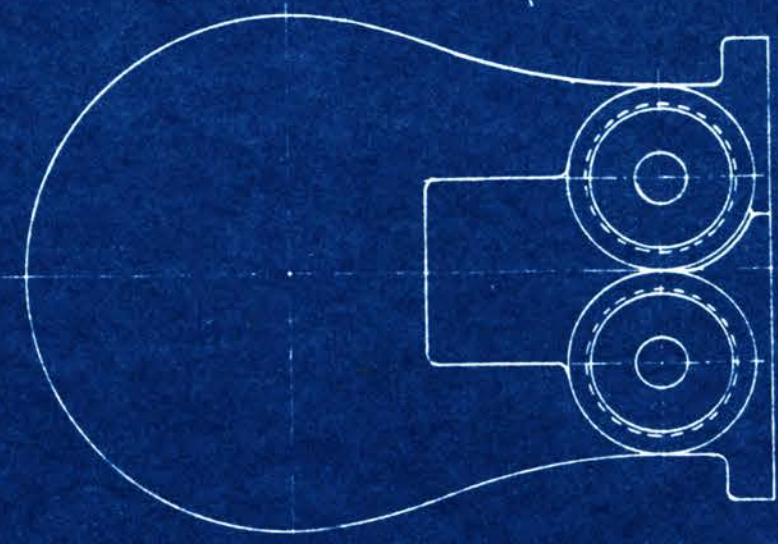
DRILL & TAP 4 HOLES  
 $\frac{3}{16}$ " U.S. THDS EQUALLY  
 SPACED ON 4 $\frac{1}{2}$ " B.C.



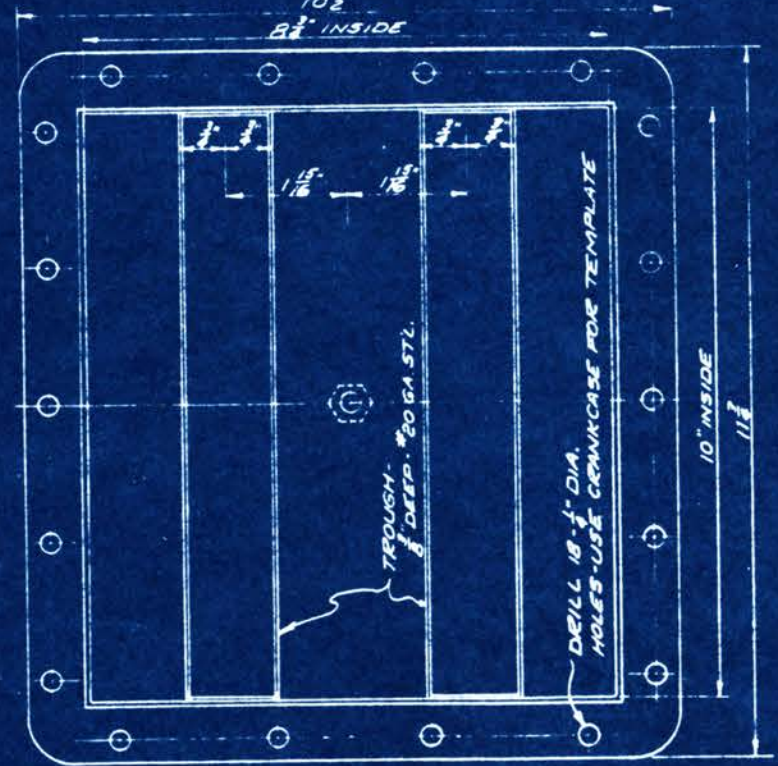
CYLINDER  
 4-REQ'D.



MANIFOLD BRACKET  
 4-REQ'D.  
 MATERIAL-ST'D. MODEL "T" FORD MANIFOLD BRACKET



CYLINDER HEAD  
 4-REQ'D.  
 MATERIAL ~ CAST BRONZE  
 (CARRIED IN STOCK)



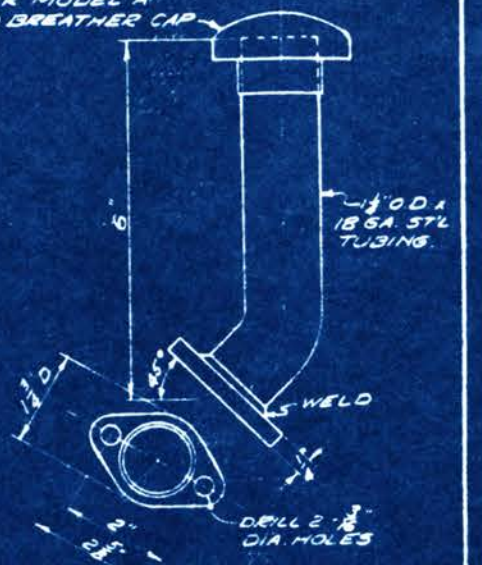
PAN  
 1-REQ'D.  
 MATERIAL ~ #20 GA STL. #

GRIND TO  
 FIT O.D. OF  
 CYLINDER  
 WALL.

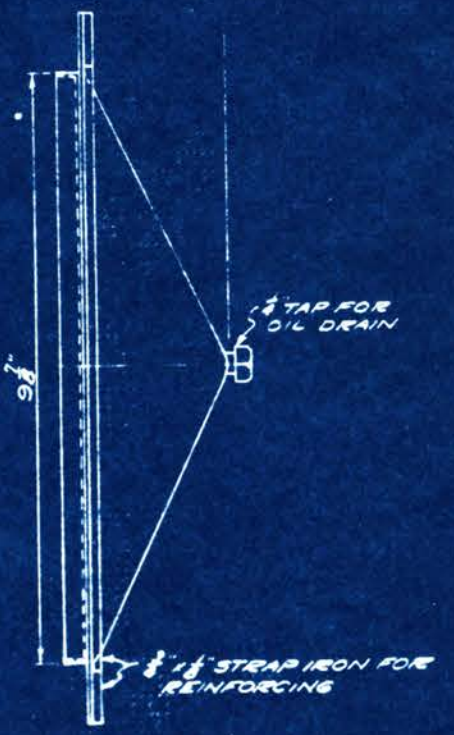


EXHAUST MANIFOLD CLAMP  
 2-REQ'D.  
 MATERIAL ~ 1 $\frac{1}{2}$ " x  $\frac{1}{2}$ " x  $\frac{1}{2}$ " LG. CHANNEL

STOCK MODEL "A"  
 FORD BREATHER CAP



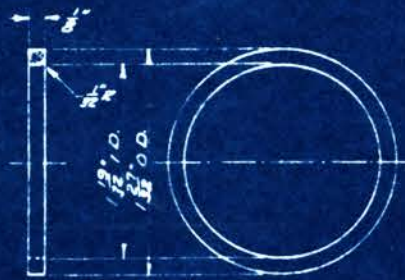
BREATHER PIPE  
 1-REQ'D



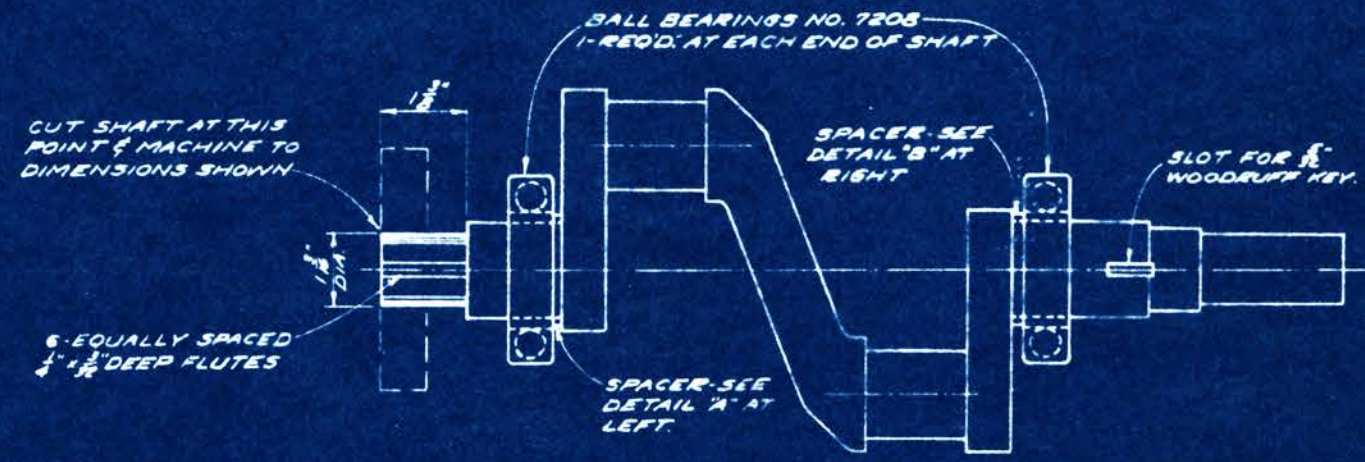
PERRY-BRAUER MOTOR CO.  
 863 W. JEFFERSON BLVD.  
 LOS ANGELES 7, CALIFORNIA  
 DETAILS OF  
 PISTON, CYLINDER HEAD, PAN, EXHAUST  
 MANIFOLD CLAMP & MANIFOLD  
 BRACKET

COPYRIGHT 1945 BY  
 PERRY-BRAUER MOTOR CO.

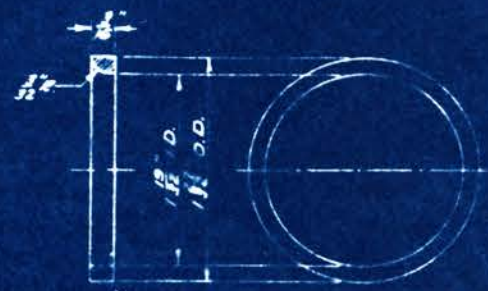
DATE 9-22-44  
 DRAWN BY RVG  
 DWG. NO. A-2



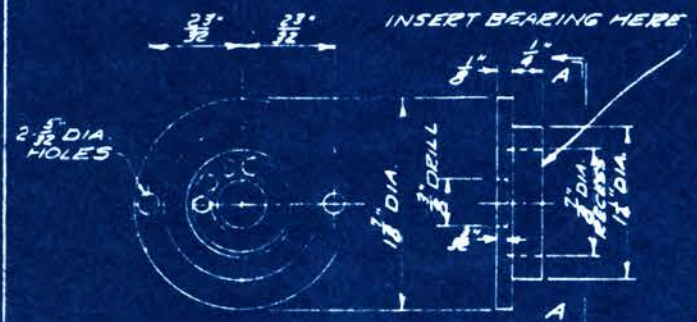
**DETAIL A**  
1-REQ'D.  
MATERIAL - BRASS



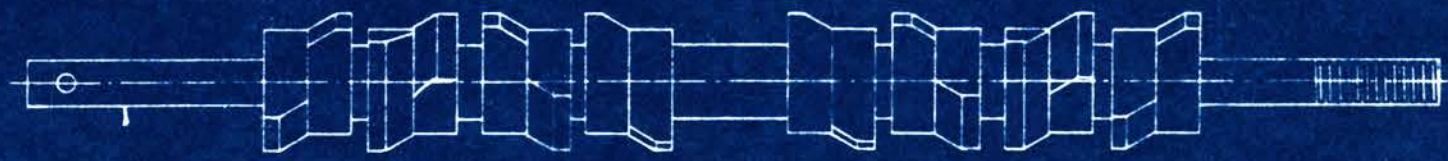
**CRANK SHAFT**  
1-REQ'D.  
MODEL A FORD TRUCK SHAFT  
4 1/2" STROKE



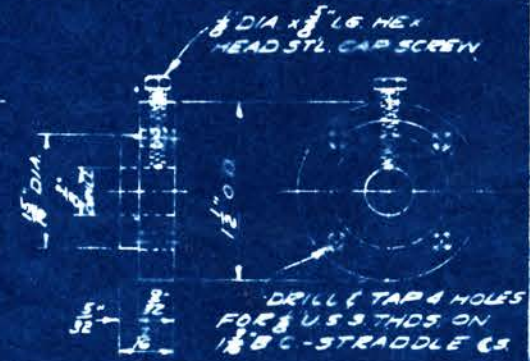
**DETAIL B**  
1-REQ'D.  
MATERIAL - STEEL



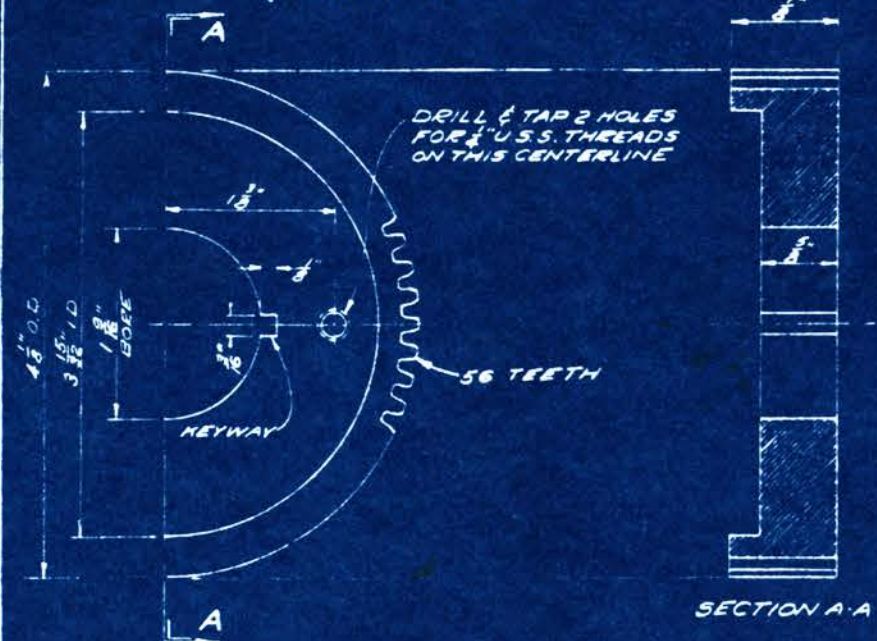
**SECTION A-A**  
**CAM SHAFT BEARING & RETAINER**  
2-REQ'D. PER UNIT  
PER EACH (1-BEARING #53-K  
1-BRASS RETAINER)



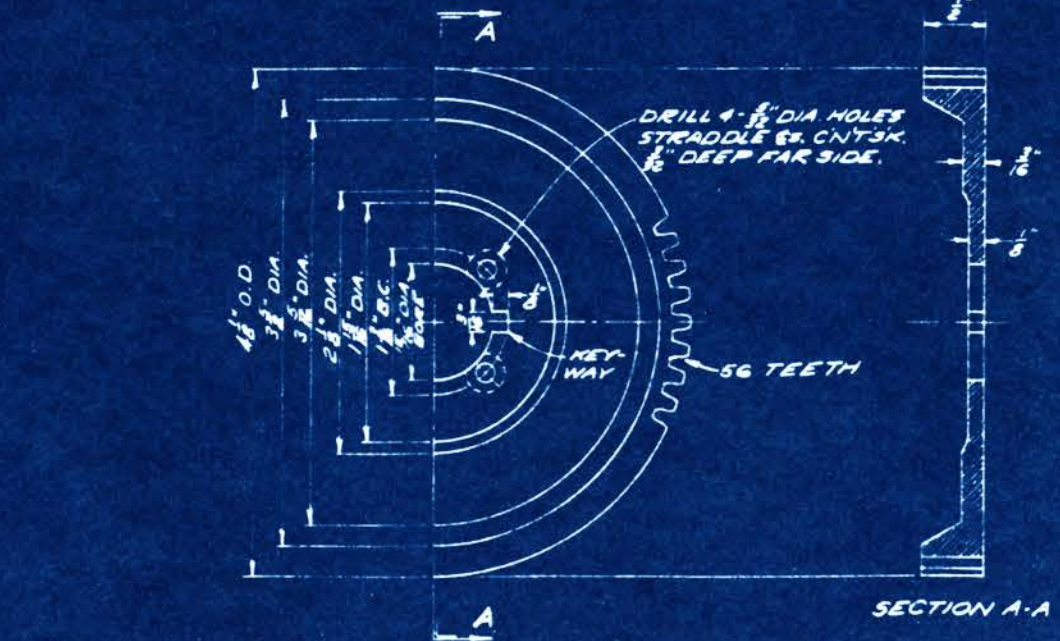
**CAM SHAFT**  
1-REQ'D.  
CARRIED IN STOCK



**CAM SHAFT TIMING GEAR HUB**  
1-REQ'D.  
MATERIAL - STEEL  
NOTE - LOCK HUB IN PLACE ON GEAR  
END OF CAMSHAFT BEFORE  
ATTACHING GEAR.



**SECTION A-A**  
**CRANK SHAFT TIMING GEAR**  
1-REQ'D.  
MATERIAL - BRASS



**SECTION A-A**  
**CAM SHAFT TIMING GEAR**  
1-REQ'D.  
MATERIAL - BRASS

COPYRIGHT 1945 BY  
PERRY-BRAUER MOTOR CO.

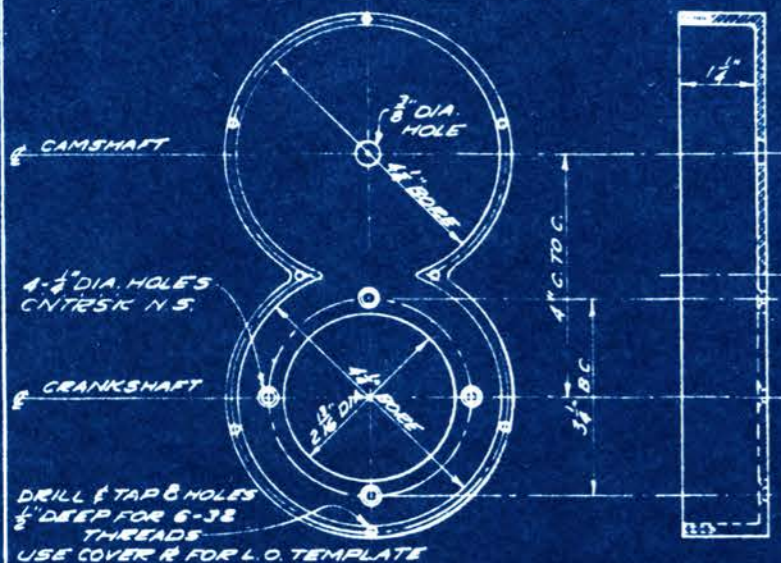
PERRY-BRAUER MOTOR CO.  
663 W. JEFFERSON BLVD.  
LOS ANGELES 7, CALIFORNIA

**DETAILS OF**  
**CRANK SHAFT, CAM SHAFT,**  
**TIMING GEARS & ACCESSORIES**

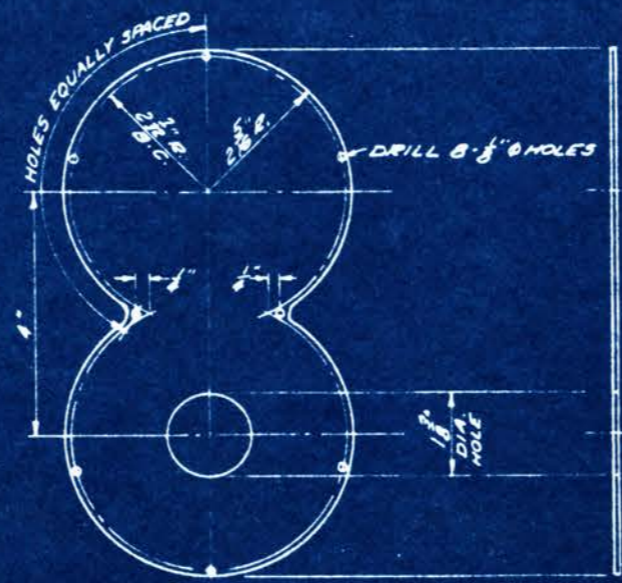
DATE 9-5-44  
DRAWN BY RVS

DWG. NO. A-3

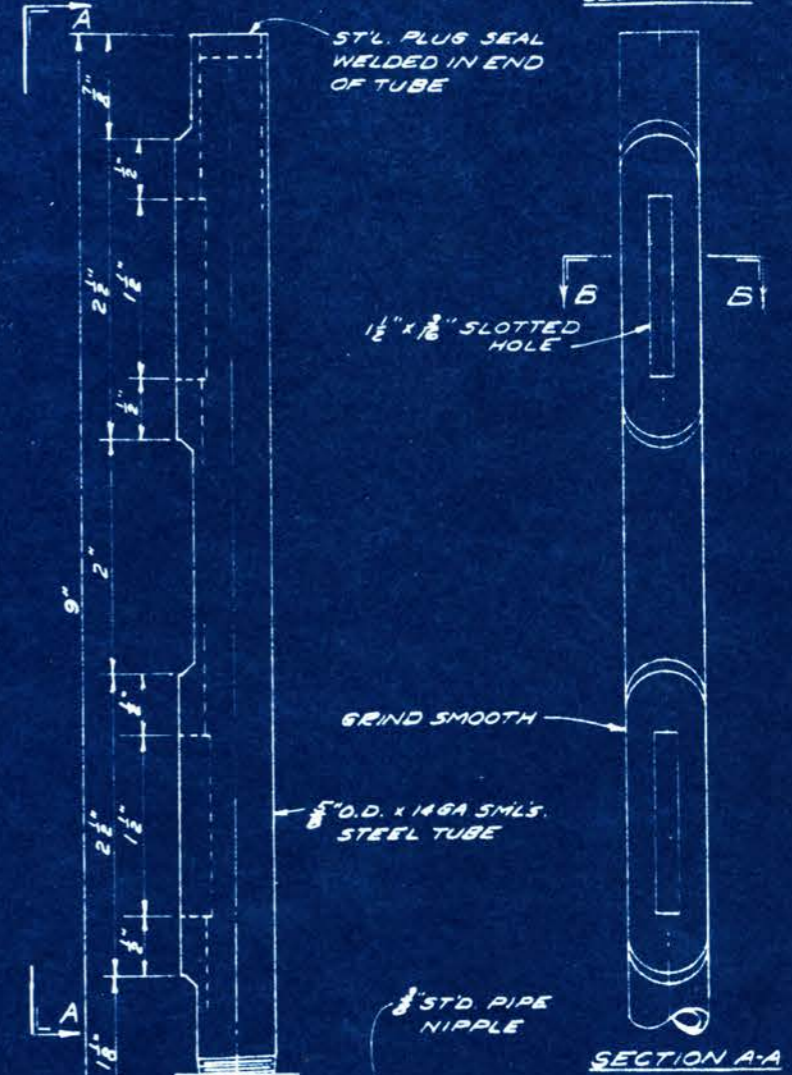




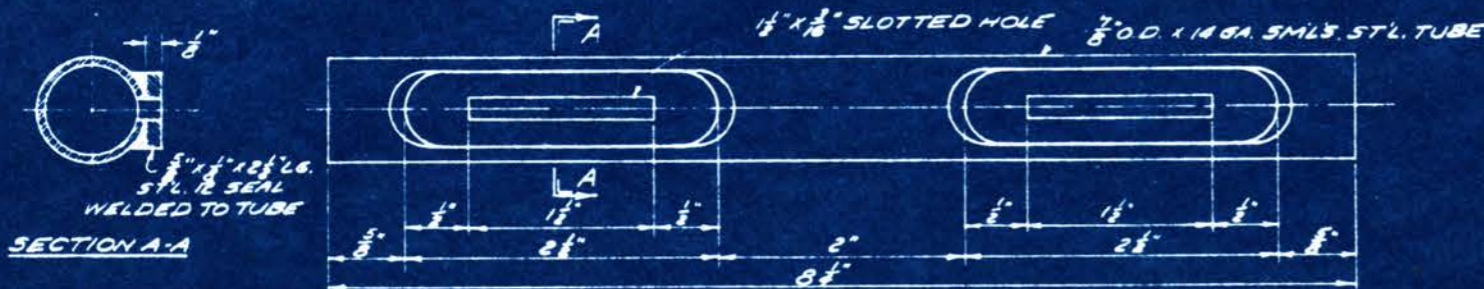
**TIMING GEAR CASE**  
1-REQ'D.  
MATERIAL - CAST ALUMINUM  
CARRIED IN STOCK



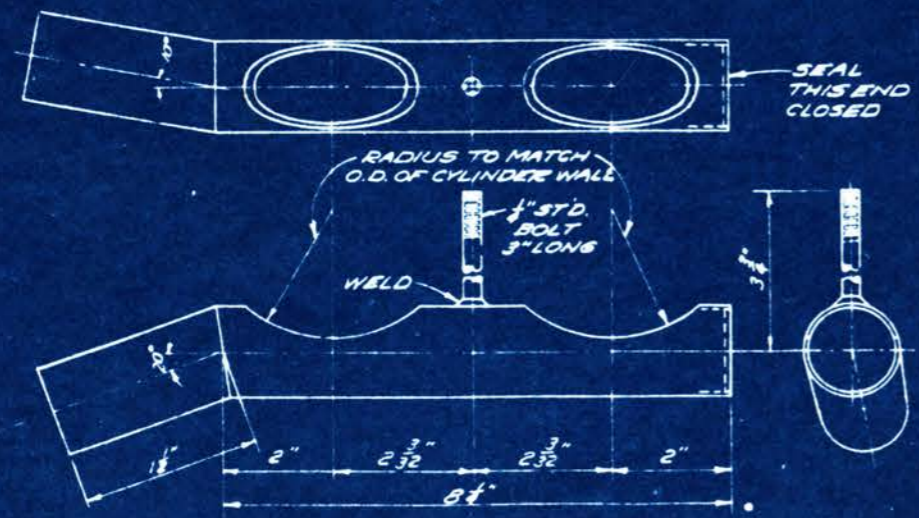
**TIMING GEAR CASE COVER PLATE**  
1-REQ'D.  
MATERIAL - #16 GA. STL. #



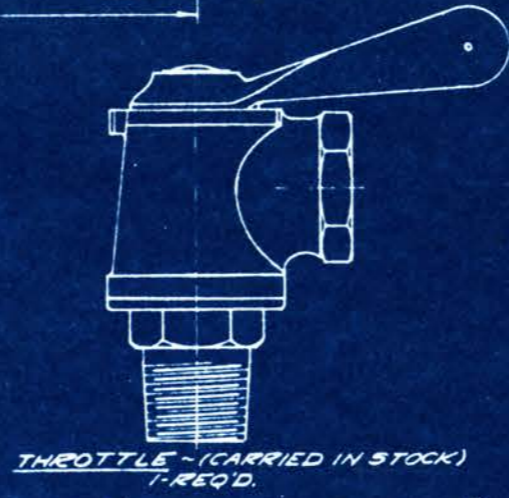
**INTAKE MANIFOLD**  
2-REQ'D



**EXHAUST MANIFOLD**  
2-REQ'D.



**CYLINDER EXHAUST MANIFOLD**  
2-REQ'D.  
MATERIAL - 1 1/2" O.D. x 1/8 GA. STEEL TUBING



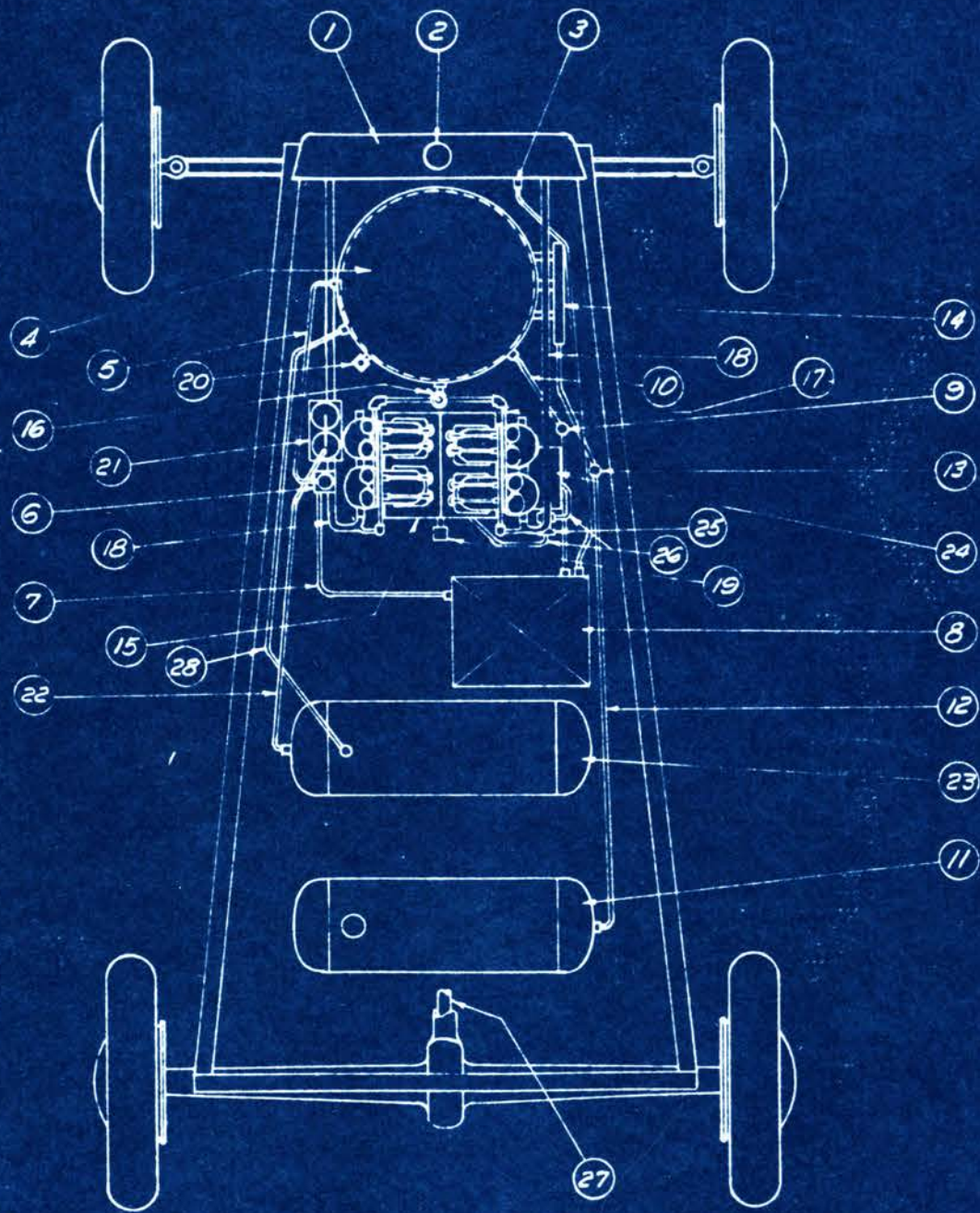
**THROTTLE TEE**  
1-REQ'D.  
MATERIAL - STEEL

COPYRIGHT 1945  
BY PERRY-BRAUER  
MOTOR CO.

PERRY-BRAUER MOTOR CO.  
663 W. JEFFERSON BLVD.  
LOS ANGELES 7, CALIFORNIA

**DETAILS OF**  
**TIMING GEAR CASE & COVER**  
**MANIFOLDS & THROTTLE**

|              |             |
|--------------|-------------|
| DATE         | DWG NO. A-5 |
| DRAWN BY RVS |             |



- ① RADIATOR - USE ANY STOCK AUTOMOBILE RADIATOR
- ② SEAL RADIATOR CAP & OVERFLOW PIPE ABSOLUTELY AIR-TIGHT
- ③ OUTLET IN RADIATOR FOR CONDENSATE DRAIN TO TANK
- ④ HEATER
- ⑤ FEED LINE FROM LIQUID PUMP TO HEATER
- ⑥ LIQUID PUMP FOR RETURNING LIQUID TO HEATER
- ⑦ FEED LINE FROM STORAGE TANK TO LIQUID PUMP
- ⑧ LIQUID STORAGE TANK
- ⑨ VALVE FOR LOWERING LIQUID LEVEL IN HEATER
- ⑩ DRAIN LINE FROM HEATER TO STORAGE TANK
- ⑪ STORAGE TANK FOR INFLAMMABLE FUEL
- ⑫ FEED LINE FROM FUEL TANK TO BURNER.
- ⑬ VALVE FOR CONTROLLING BURNER OUTPUT.
- ⑭ BURNER
- ⑮ MOTOR
- ⑯ THROTTLE-VALVE TYPE. FROM HEATER TO INTAKE MANIFOLD
- ⑰ INTAKE MANIFOLD
- ⑱ FEED LINE FROM EXHAUST MANIFOLDS TO RADIATOR
- ⑲ LEVER FOR SHIFTING CAM-SHAFT TO REVERSE MOTOR
- ⑳ GLASS GAUGE FOR LIQUID LEVEL
- ㉑ AIR COMPRESSOR-CHAIN DRIVEN FROM CRANKSHAFT.
- ㉒ FEED LINE-AIR COMPRESSOR TO AIR TANK.
- ㉓ COMPRESSED AIR STORAGE TANK.
- ㉔ GENERATOR-BELT DRIVEN FROM CRANKSHAFT.
- ㉕ OIL PUMP-ON END OF GENERATOR
- ㉖ FEED LINES TO & FROM OIL PUMP.
- ㉗ DRIVESHAFT-DIRECT DRIVE FROM CRANKSHAFT OF MOTOR.
- ㉘ FEED LINE-COMPRESSOR TANK TO HEATER

FERRY-BRAUER MOTOR CO.

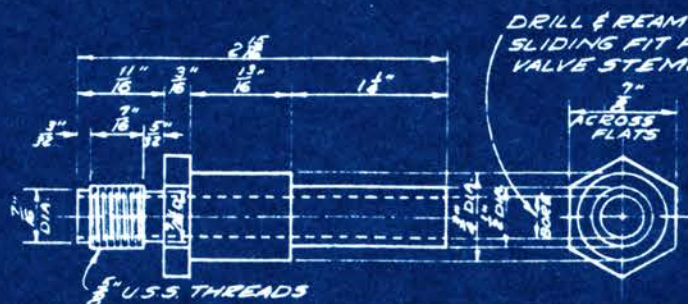
663 W. JEFFERSON BLVD.  
LOS ANGELES 7, CALIFORNIA

COMPLETE ASSEMBLY  
DETAILS

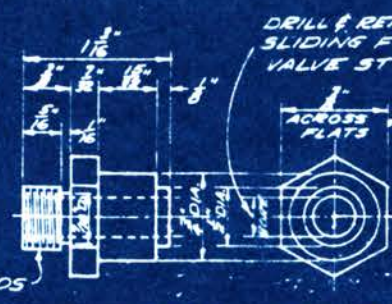
COPYRIGHT 1945 BY  
PERRY-BRAUER MOTOR CO.

DATE 1-31-45  
DRAWN BY RVG.

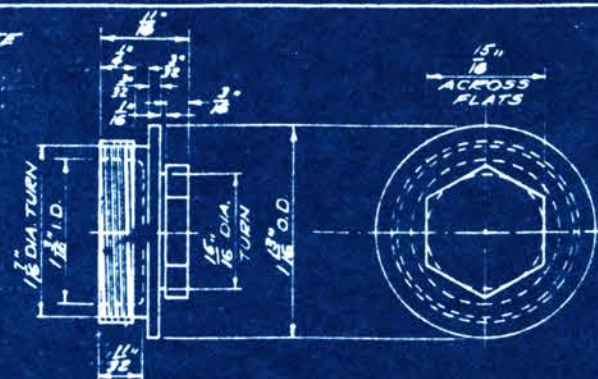
DWG. NO. A-5



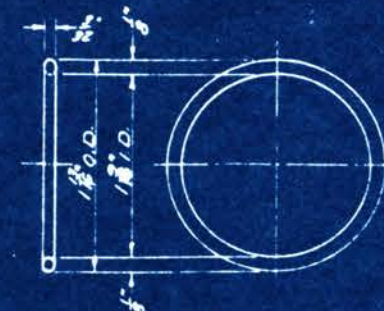
**INTAKE VALVE GUIDE**  
MATERIAL -  $\frac{1}{2}$ " BRASS HEX BAR  
4-REQ'D.



**EXHAUST VALVE GUIDE**  
MATERIAL -  $\frac{1}{2}$ " BRASS HEX BAR  
4-REQ'D.



**VALVE HEAD COVER**  
MATERIAL - CAST BRONZE  
8-REQ'D.



**GASKET**  
MATERIAL - COPPER CLAD  
ASBESTOS  
8-REQ'D.



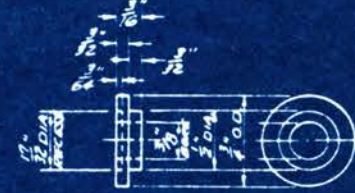
**ADJUSTING NUT**  
MATERIAL -  $\frac{5}{16}$ " STEEL HEX BAR  
8-REQ'D.



**INTAKE VALVE PUSH ROD**  
4-REQ'D. 'L' = 3"  
**EXHAUST VALVE PUSH ROD**  
4-REQ'D. 'L' = 3"  
MATERIAL -  $\frac{1}{4}$ " STEEL DRILL ROD



**VALVE SPRING  
RETAINING WASHER**  
MATERIAL - BRASS  
8-REQ'D.



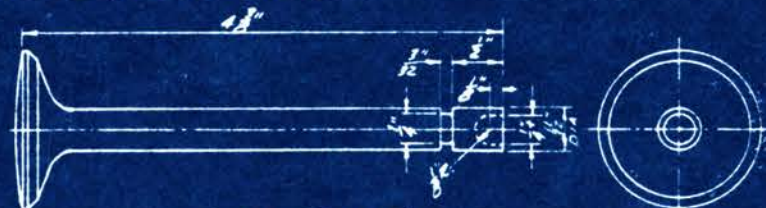
**VALVE SPRING  
RETAINING WASHER**  
MATERIAL - BRASS  
8-REQ'D.



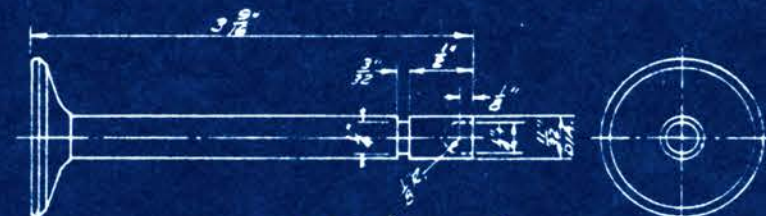
**RETAINING KEY**  
MATERIAL - STEEL  
8-REQ'D.



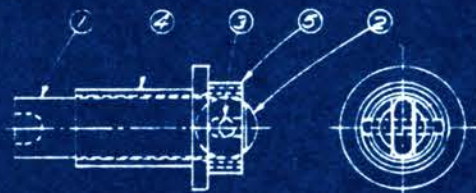
**VALVE SPRING**  
CARRIED IN STOCK  
8-REQ'D.



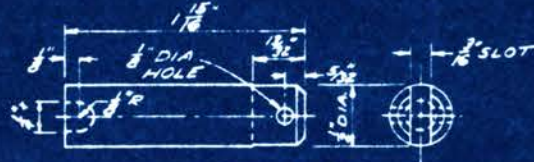
**INTAKE VALVE**  
CARRIED IN STOCK  
4-REQ'D.



**EXHAUST VALVE**  
CARRIED IN STOCK  
4-REQ'D.



**ASSEMBLY OF  
VALVE LIFTER**  
SEE DETAIL OF PARTS AS NUMBERED  
8 ASSEMBLIES REQ'D.



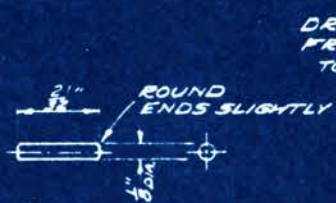
① **VALVE LIFTER ROD**  
MATERIAL -  $\frac{1}{8}$ " DIA. STEEL DRILL ROD  
1-REQ'D. PER ASSEMBLY



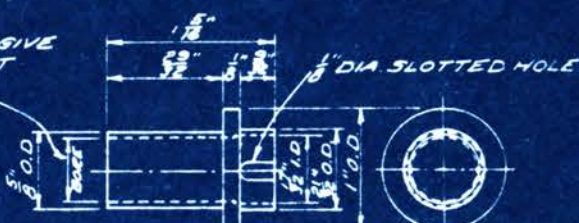
② **ROLLER**  
MATERIAL - TOOL STEEL -  
CASE HARDENED  
1-REQ'D. PER ASSEMBLY



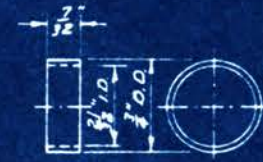
**VALVE LIFTER HOUSING BRACKET**  
4-REQ'D.  
MATERIAL - STEEL



③ **PIN**  
MATERIAL -  $\frac{1}{8}$ " DIA. DRILL ROD  
1-REQ'D. PER ASSEMBLY



④ **VALVE LIFTER HOUSING**  
MATERIAL - BRASS  
1-REQ'D. PER ASSEMBLY



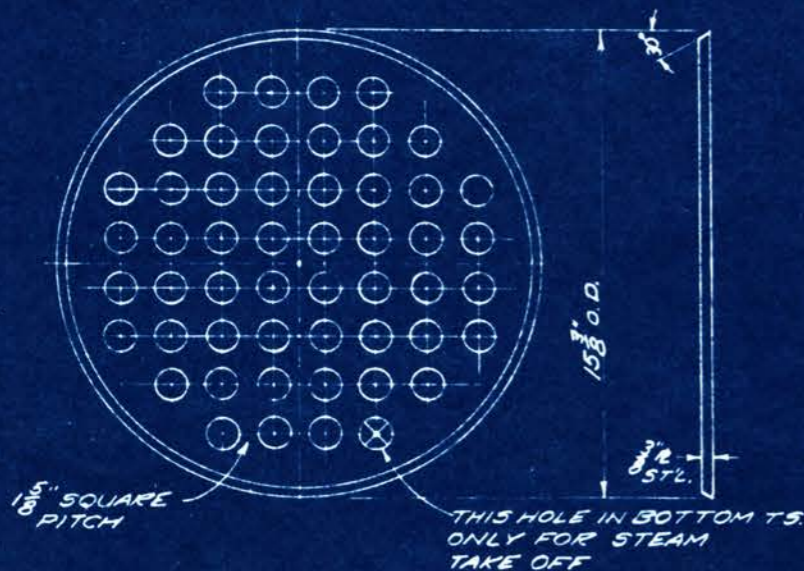
⑤ **PIN RETAINING SLEEVE**  
MATERIAL - ALUMINUM  
1-REQ'D. PER ASSEMBLY

PERRY-BRAUER MOTOR CO.  
663 W. JEFFERSON BLVD.  
LOS ANGELES 7, CALIFORNIA

DETAILS OF  
VALVES & CONNECTING PARTS

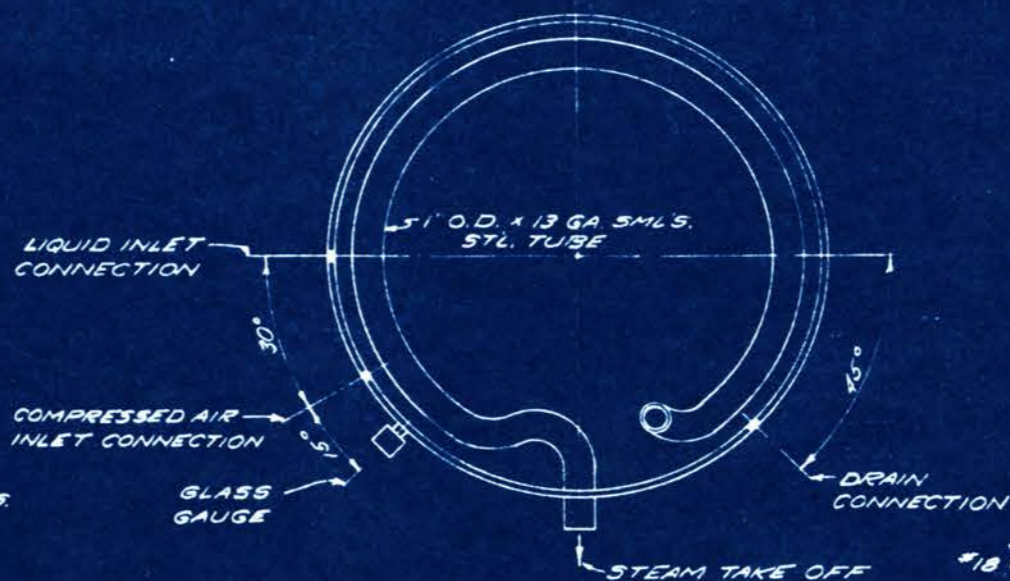
DATE 8-31-44  
DRAWN BY 219

DWG. NO. A-7

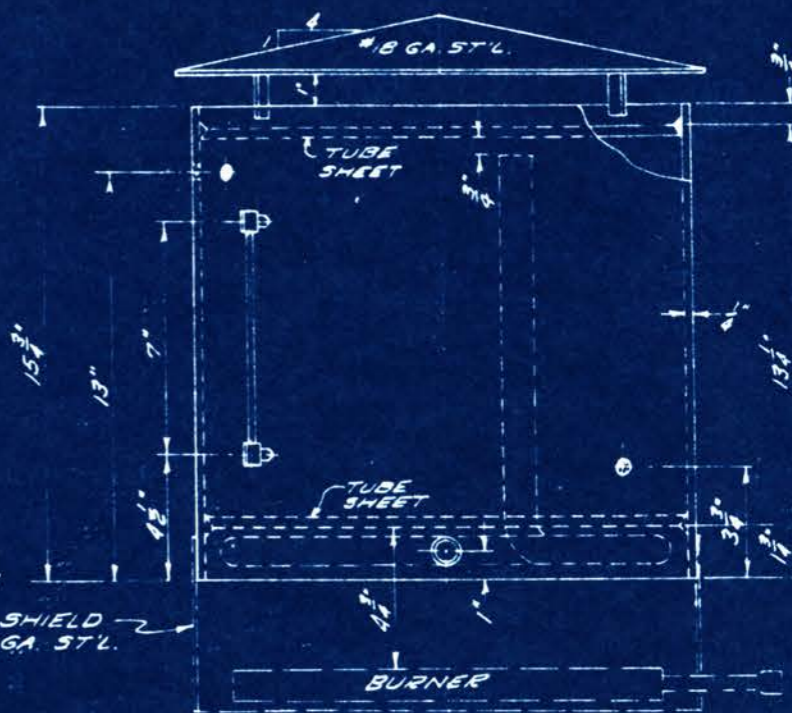


TUBE SHEETS  
2-REQ'D.

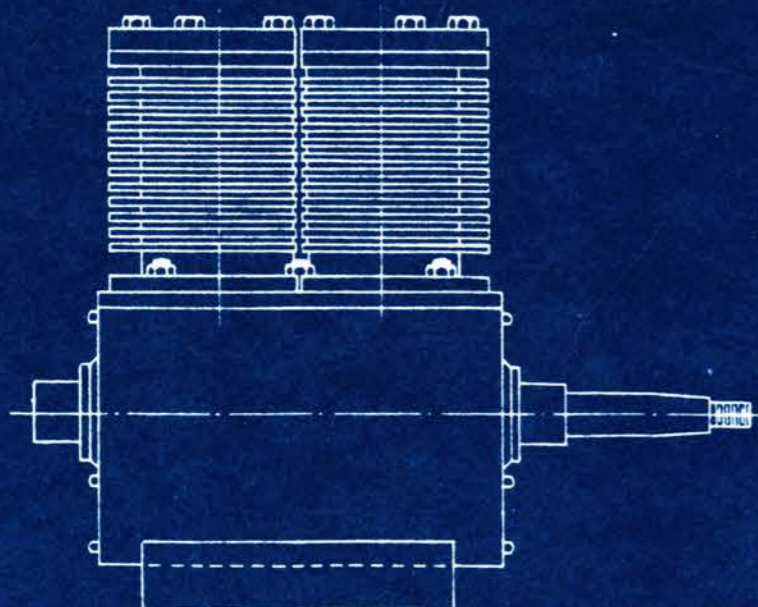
DRILL 52 HOLES & REAM TO 1.008" FOR 1" O.D. x 13 GA. SMLS. STL. TUBES. FURNISH 51 TUBES 13 1/2" L. & ROLL IN T.S.



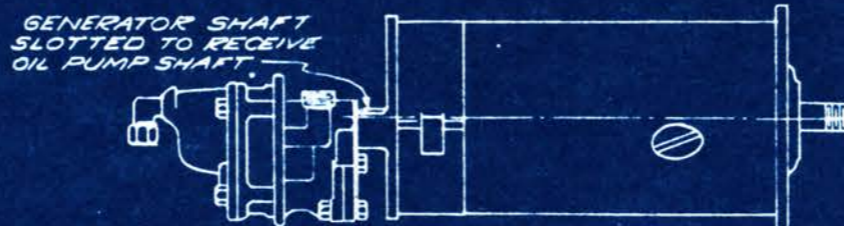
PLAN-SHOWING CONNECTIONS ORIENTATION & STEAM TAKE-OFF SUPER-HEATING COIL. (TUBE SHEETS & TUBES OMITTED).



BOILER  
1-REQ'D.  
(CARRIED IN STOCK)



2 1/4" x 2 1/4" TWO CYLINDER AIR COMPRESSOR  
1-REQ'D.



OIL PUMP & GENERATOR  
1-EACH REQ'D.

COPYRIGHT 1945 BY  
PERRY-BRAUER MOTOR CO.

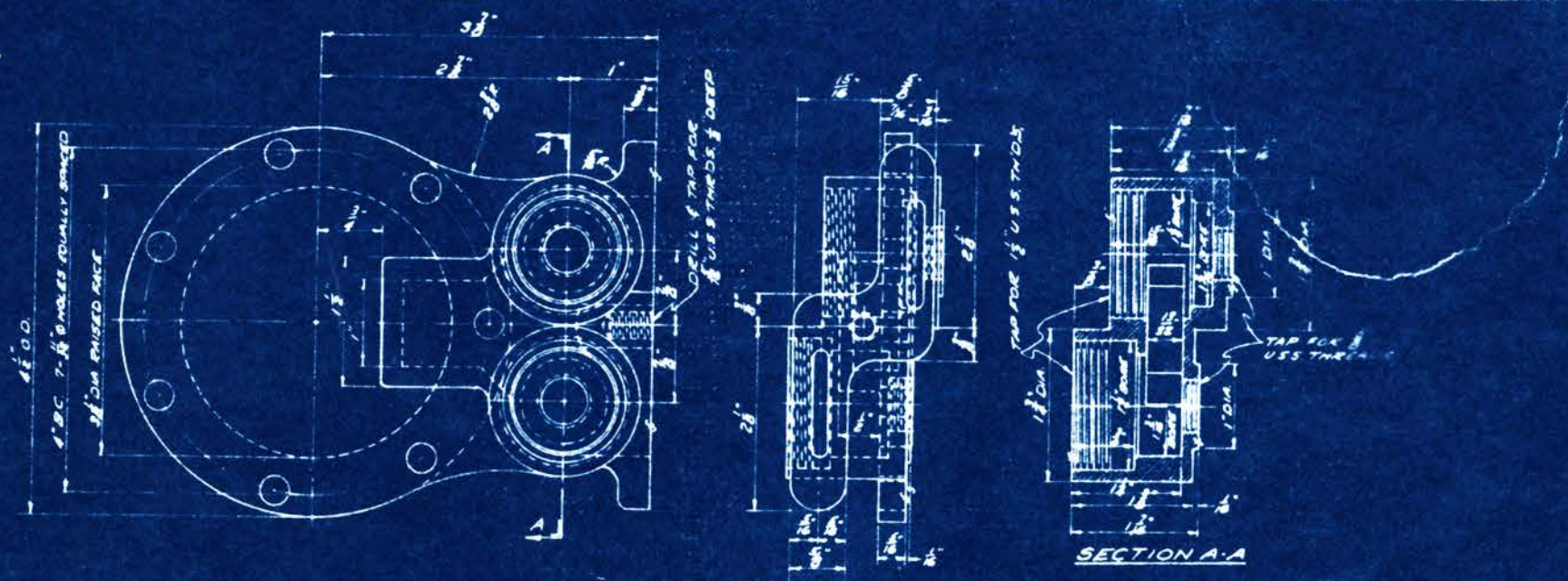
PERRY-BRAUER MOTOR CO.  
663 W. JEFFERSON BLVD.  
LOS ANGELES 7, CALIFORNIA

DETAILS OF  
BOILER, AIR COMPRESSOR  
OIL PUMP & GENERATOR

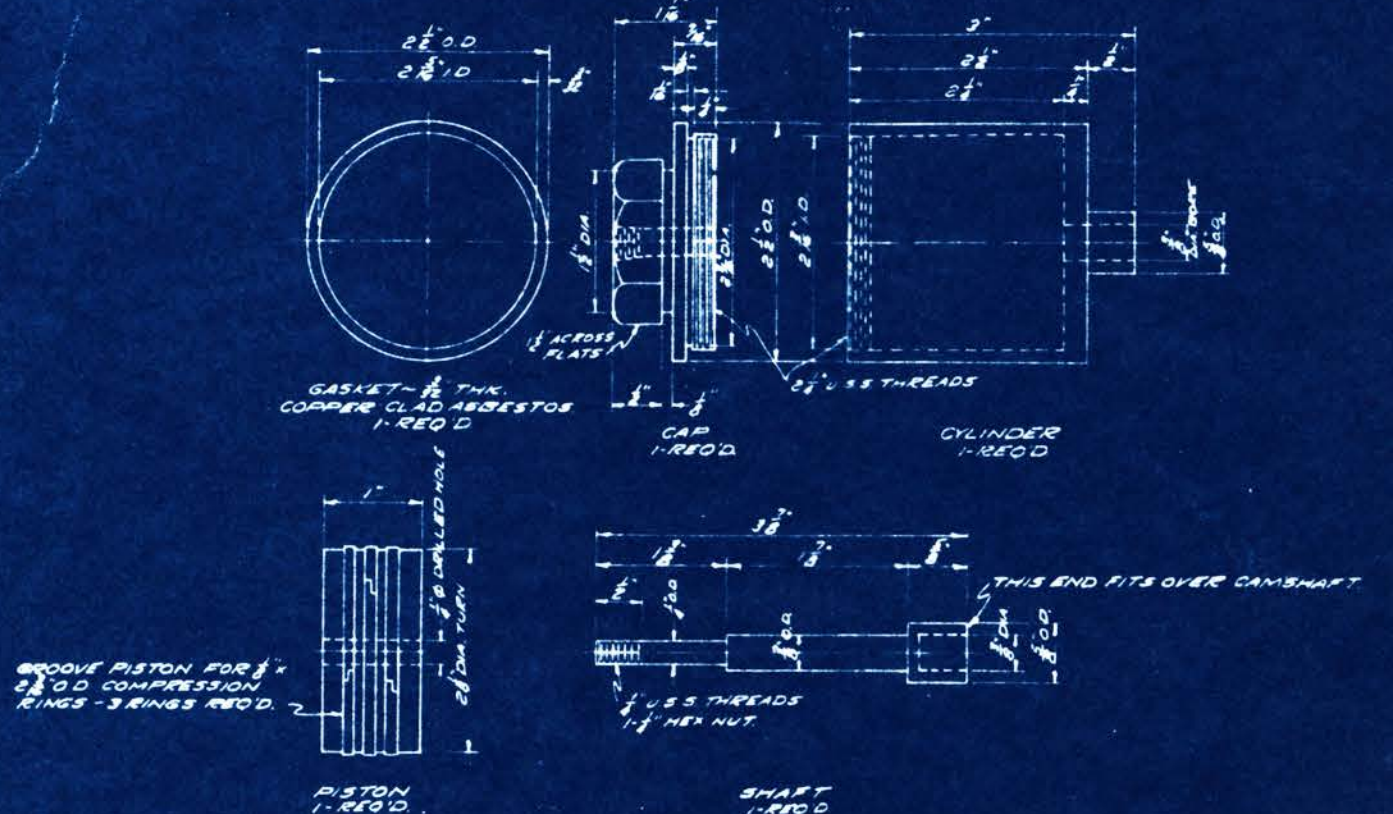
DATE 1-3-45  
DRAWN BY RVG

DWG. NO. A-8

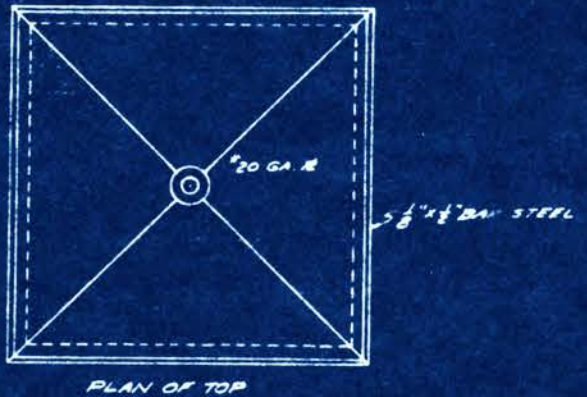




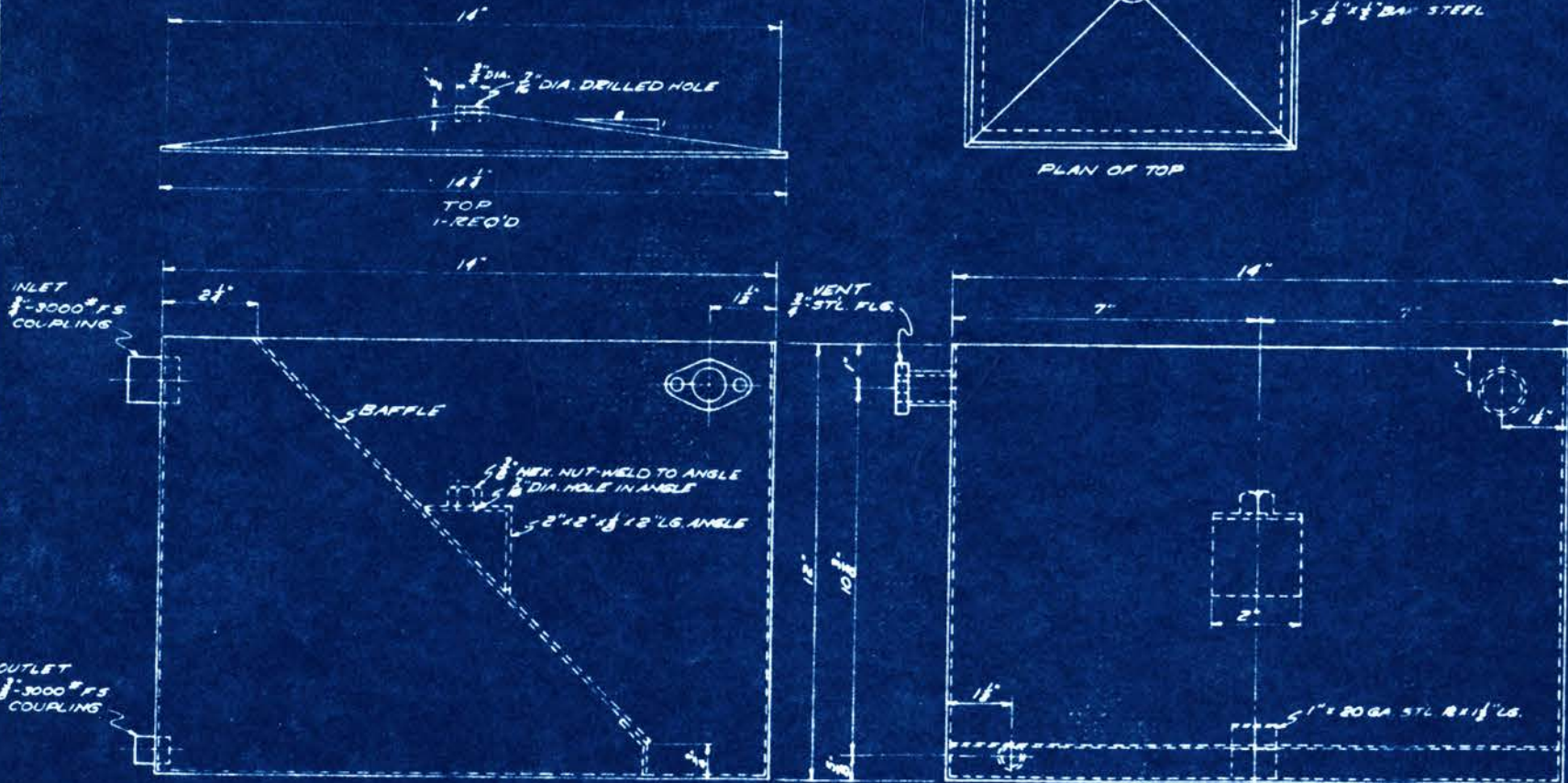
MACHINING DETAILS FOR CAST HEADS  
1-REQ'D.  
MATERIAL - CAST BRONZE OR CAST IRON



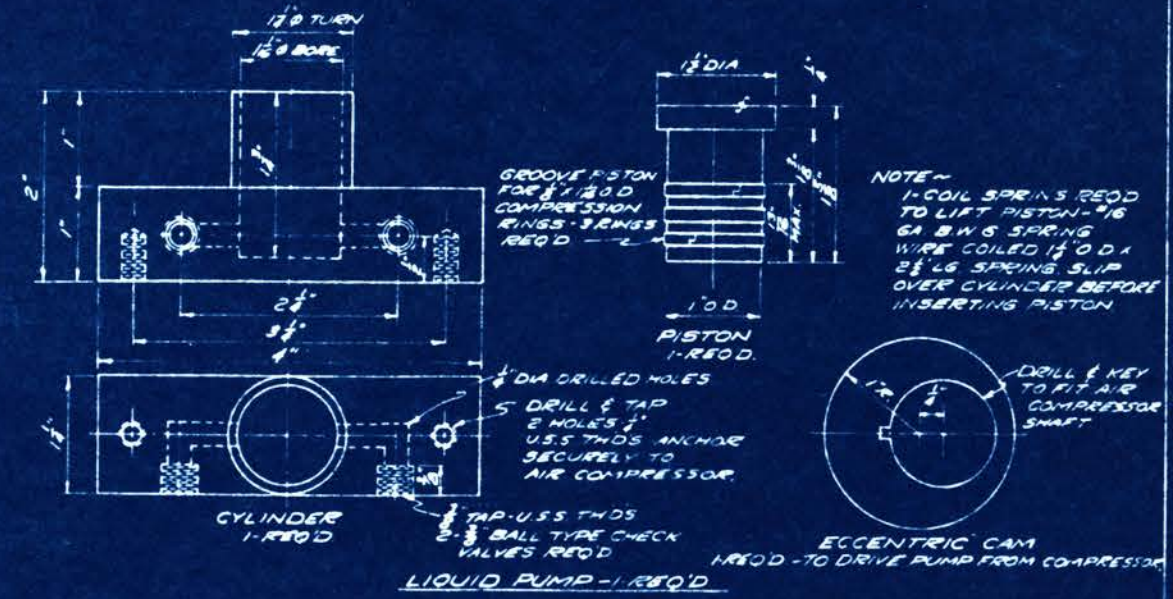
PARTS FOR REVERSE CYLINDER ASSEMBLY  
1-ASSEMBLY REQ'D



PLAN OF TOP



LIQUID STORAGE TANK  
1-REQ'D.  
MATERIAL - 20 GA STL R  
ALL WELDED CONSTRUCTION  
SHOULD BE GALVANIZED.  
1-3/8\"/>



LIQUID PUMP - 1-REQ'D

ECCENTRIC CAM  
1-REQ'D - TO DRIVE PUMP FROM COMPRESSOR