

4. D



*Kelsey's*  
*Collection*  
*of*  
**Antique Cars**

PRICE 30 CENTS

*Kelsey's Collection*  
*of*



All pictures in this book  
show cars exactly as they  
are seen in our collection.

Published April, 1955

Camdenton, Missouri

Copyright 1955 by Paul L. Kelsey

All photos taken by Bob Hough, Lebanon, Mo.

Printed in Kansas City, Mo., by Print-O-Press, Inc., 134 W. 8th St.

## THE KELSEY COLLECTION

The Kelsey Collection of Antique Motor Cars has been pronounced, by those who have made a study of such exhibitions, to be among the finest to be seen anywhere in the United States. We feel that this is due very largely to the fact that in gathering together the many models on display, our first consideration has always been centered on the rarity of each vehicle and the public interest indicated in them.

The collection was started back in 1928 when the Maxwell Messenger (shown on page 7) was acquired. Little by little, and with extreme care, additional specimens were added until now we have on display one of the most complete and interesting collections to be found anywhere.

All of the cars shown in the collection have been completely restored to perfect working condition and the colors and trims on each model are authentic. In restoring these cars to original perfection neither time nor money has been spared, and because of this we feel that the Kelsey Collection offers an unusual educational opportunity for young and old alike.

We are particularly happy when our visitors spend the full time necessary to browse through the complete exhibit and thus make a comparative study of the numerous models shown. Likewise, visitors are encouraged to take their own pictures and every possible assistance is given in this respect. Those who desire to take home souvenirs and mementos of their visit will find an interesting and varied assortment to choose from in the lobby of the building.

While the large and varied collection of antique motor cars is always the center of interest, visitors will find an added feature in the large collection of old-time mechanical musical instruments to be seen at no additional cost. These instruments have all been faithfully restored to full playing condition and their nostalgic tunes are a delight to practically all who hear them played. The collection includes such antiques as music boxes, player pianos, mechanical violins, calliopes and many others.

The building which houses the collection was especially built for the purpose and the site at Camdenton, Missouri (on Highway 54), was particularly selected because of its accessibility to various trans-continental automobile routes such as U. S. Highway 66 and U. S. 50.

In addition, there are numerous attractions throughout the Lake of the Ozarks region, nearby, which visitors will find worthwhile to consider for their pleasure. Bagwell Dam, but a few miles from Camdenton, is especially recommended. And Lake of the Ozarks itself affords innumerable diversions such as fishing, boating, swimming and other aquatic sports.



## MOBILE STEAMER—1899

Comparatively few present-day motorists have ever heard of this once popular steam car—and it is safe to say that an even smaller number has ever seen one. This is a rare car indeed, and is considered as one of the most interesting in existence. The model shown above has two cylinders which operate on 225 pounds of steam pressure. Top speed is in the neighborhood of 30 miles per hour, with a cruising speed of 20. A tank of water will enable the car to cover about 20 miles. Under normal conditions it takes approximately 12 minutes to get up steam.

The Mobile was manufactured by The Mobile Company of America at Tarrytown-on-the-Hudson, New York.

To the right, greatly reduced, is one of the early advertisements used by the Mobile makers.

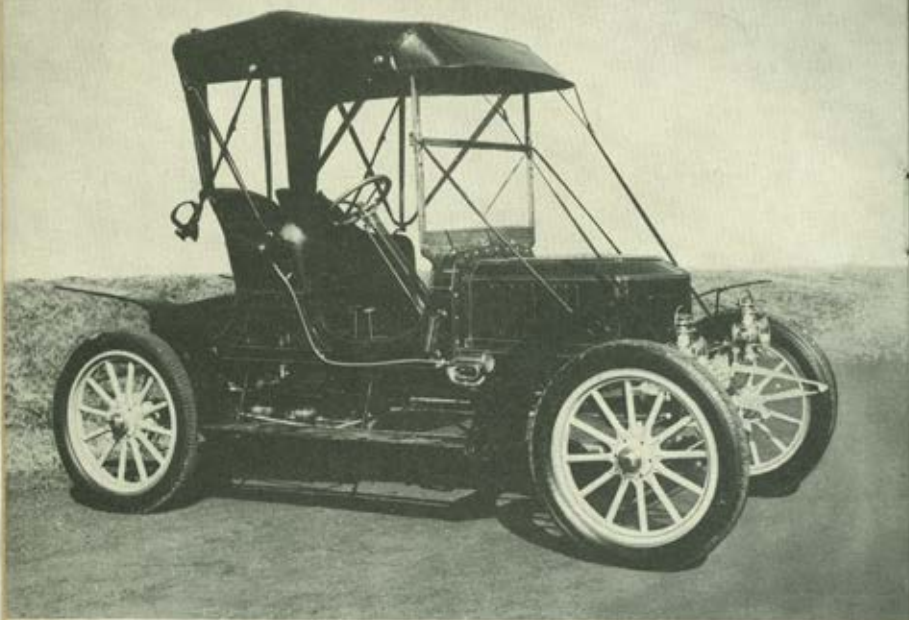
*Mobile* Rapid Transit  
*Route through Wall Street*  
 Running from Wall Street Park and Madison Square Garden, Wall Street to Hudson St. New York City, with Terminal at Whitehall Station, N. Y.

The *Mobile* Rapid Transit Company will on this route use both the *Mobile* Company of America and *Mobile* Motor Vehicle Company. They will operate on the latter in being able to run at all the time of year in the most economical way.

The cost of power for operating is not one quarter of a cent per passenger in the winter months, and less than one cent per passenger in the summer months. They will be put on the route in a car of 200 seats.

THEY ALSO TRANSIT *MOBILE* MOTOR VEHICLE WILL BE ABLE TO RUN ON THE ROAD AT AN EXPEDITIOUS SPEED AND ALSO WILL BE ABLE TO RUN IN ALL WEATHER.

The *Mobile* Company of America  
 Tarrytown, N. Y.



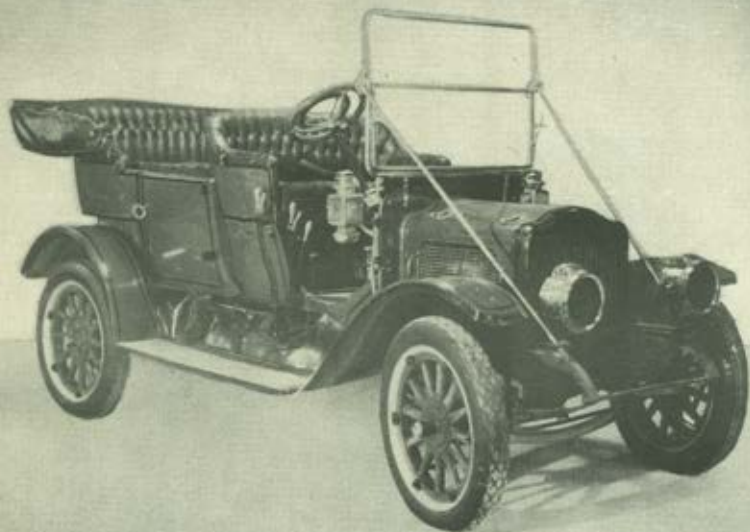
## STANLEY STEAMER—1906 (Gentlemen's Speedy Roadster)

Because of the widespread interest in the early steam cars, we have made a special effort to present the finest specimens possible to obtain, for our collection. The Stanley Steamer shown above operates on 500 pounds of steam pressure and holds 35 gallons of water. This is good for about 40 miles. Top speed ranges from 60 to 65 miles per hour and cruising speed 30 to 40 miles per hour. Engine turns over 633 revolutions per mile and gets about 12 miles to a gallon of gasoline. It requires around 17 minutes to get up steam. There are no clutch or transmission. This popular model soon became known as the Stanley Steamer sports model.

The Stanley Steamer was manufactured by the Stanley Motor Carriage Co., at Newton, Massachusetts.



Shown here is an ad for a 1908 Stanley Steamer.



## THE WHITE STEAMER—1910

In the early days, steam car manufacturers had to direct their efforts not only toward selling the idea of motor car ownership but also to the merits of steam over gasoline. The White Steamer stressed these claimed advantages: "free from vibration; noiseless; smokeless and odorless; no cranking; no gear shifting." The slogan most used to advertise the White Steamer was, "the most desirable car." The model shown above operates on 750 pounds of steam pressure and uses gasoline for fuel, as well as kerosene. With a condenser the water reservoir has to be filled about every fifty miles. Maximum speed is about 50 miles per hour.

The White Steamer was manufactured by The White Company, at Cleveland, Ohio. This company was allied with the White Sewing Machine Co.

The White Steamer was heavily advertised as indicated by the full page reproduced here.

**THE WHITE STEAMER**  
Is the Most Desirable Car

The White Steamer operates on 750 pounds of steam pressure and uses gasoline for fuel, as well as kerosene. With a condenser the water reservoir has to be filled about every fifty miles. Maximum speed is about 50 miles per hour.

The White Steamer was manufactured by The White Company, at Cleveland, Ohio. This company was allied with the White Sewing Machine Co.

**THE WHITE COMPANY**  
CLEVELAND, OHIO



## STANLEY STEAMER—1919

As described by the manufacturers, the Stanley Steamer would seem to be a car of the present, rather than one which has long since passed into the limbo of the distant past. This is what the Stanley Steamer people had to say about their product: "We are making a car which runs with a soft, smooth, gliding motion, without any noise or vibration at any speed. The ideal performance of the Stanley is based on three fundamental facts. First, the engine is geared directly and permanently to the differential; the engine speed is the same as the car speed; there is no such thing as shifting gears and therefore no such thing as a clutch or a fly-wheel." There are only 32 moving parts in the Stanley Steamer engine.

The Stanley Steamer was manufactured by Stanley Motor Carriage Co. at Newton, Massachusetts.

This advertisement is typical of those run by the Stanley Steamer in its early days.

**We Are Doing What All Other Makers Are Struggling in Vain to Do**

What No Other Maker is Even Attempting to Do

The Fuel, What's in Reserve.

Only 32 Moving Parts in the Complete Vehicle

You Want This Wonderful Performance

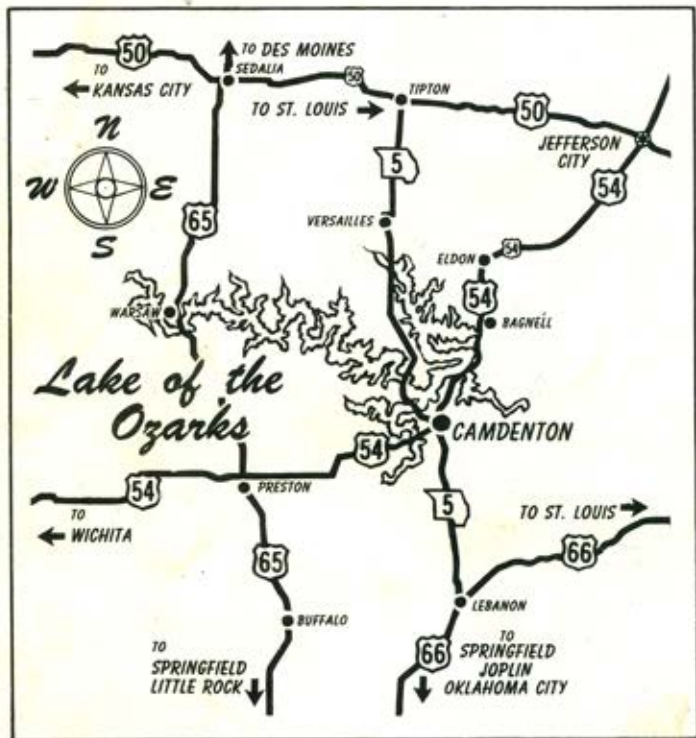
STANLEY MOTOR CARRIAGE CO., NEWTON, MASS.

# Kelsey's

## Antique Car

### Collection

is easily reached from all  
transcontinental highways.



**ON U. S. HIGHWAY 54**

**1 mile from Camdenton, Missouri**