

# BROOKS STEAM BUS



BURNS LOW GRADE FUEL OIL  
GENERATES STEAM FROM COLD  
WATER IN 20 SECONDS

AUTOMATICALLY MAINTAINS  
STEAM PRESSURE OF 750 LBS.

LOW COST OF OPERATING  
LOWER MAINTENANCE COST  
LONGER LIFE

STEAM-HEATED FOR  
WINTER USE

NO ODOR ☞ NO GEAR SHIFTING ☞ NO CLUTCH

## BROOKS STEAM MOTORS, INC.

622 NORTHUMBERLAND AVE.

:::

:::

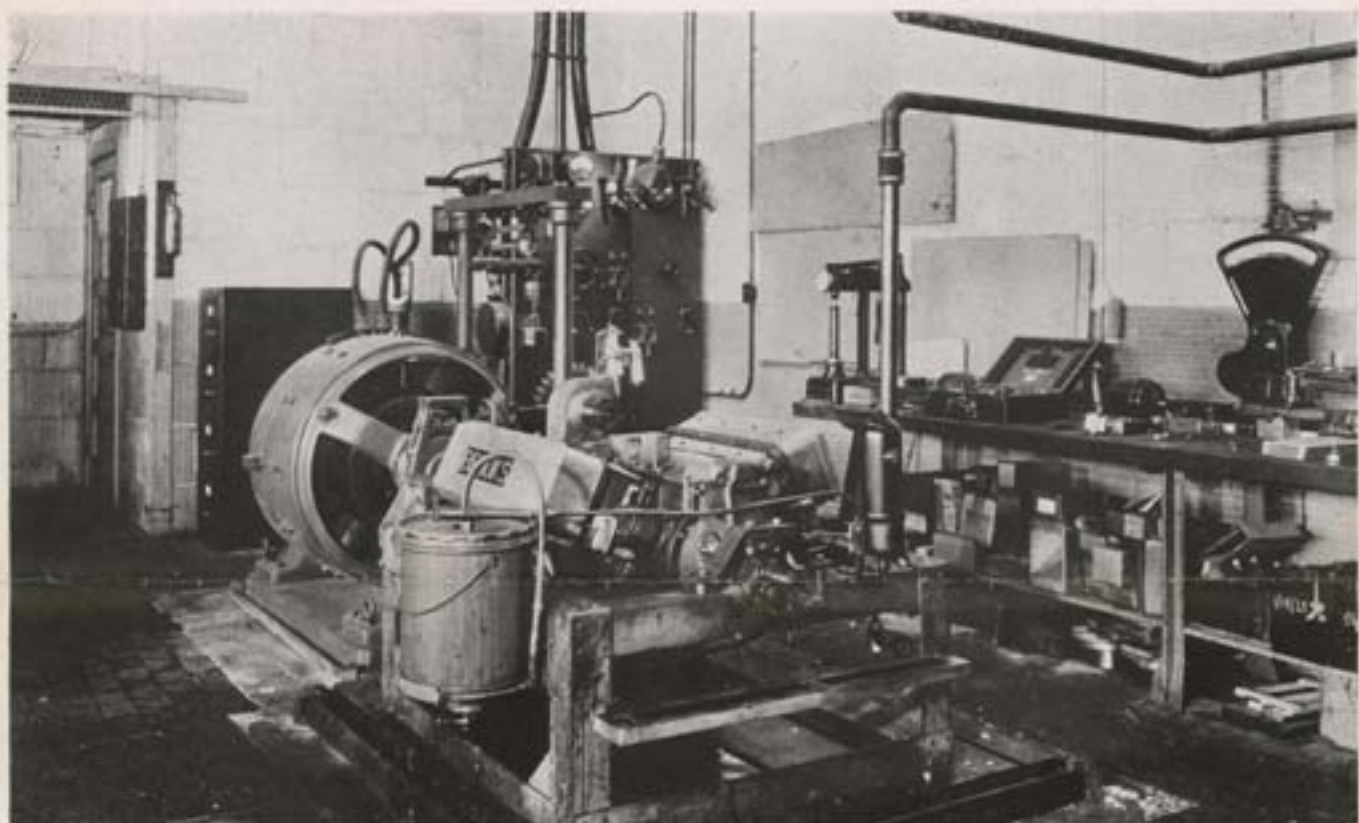
BUFFALO, NEW YORK



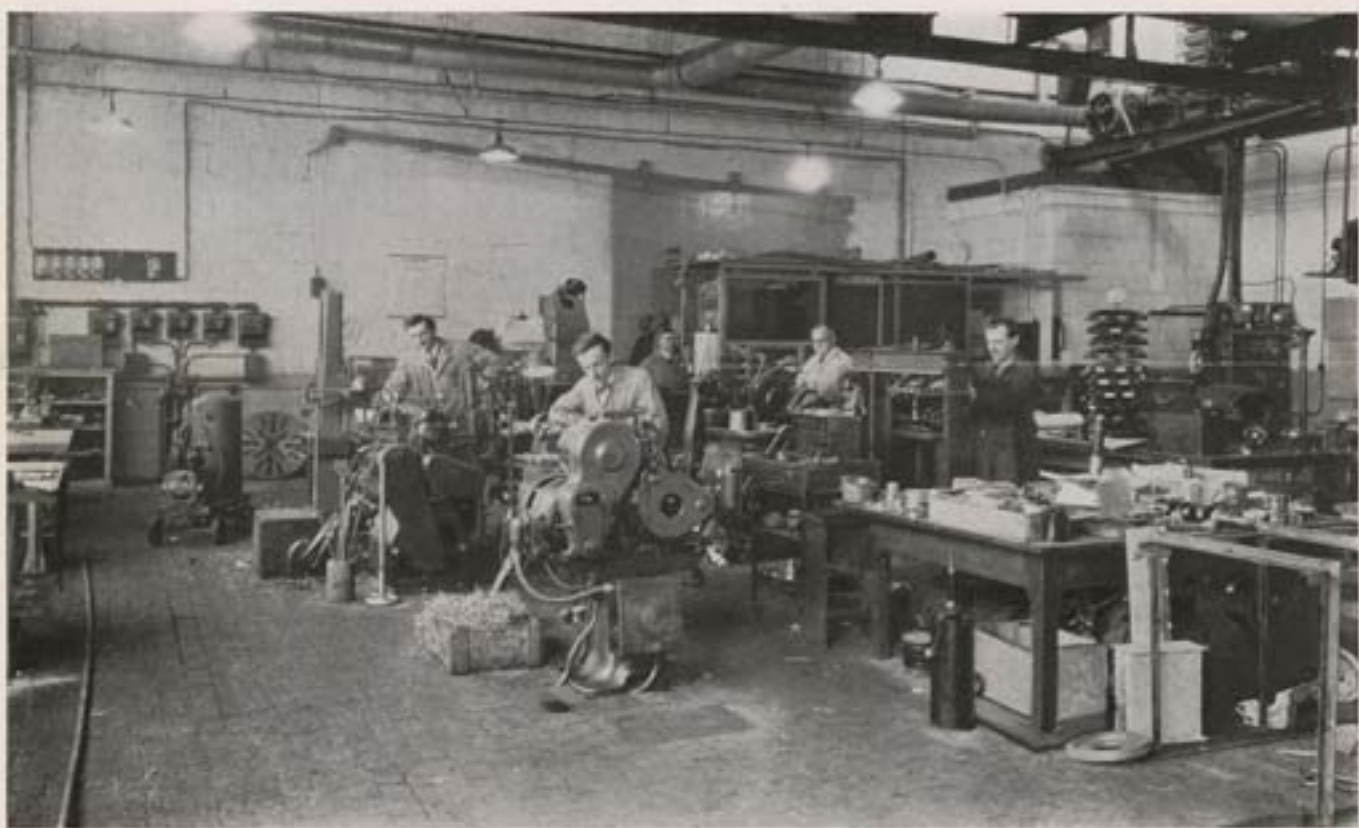
FRONT VIEW, OFFICES AND PLANT



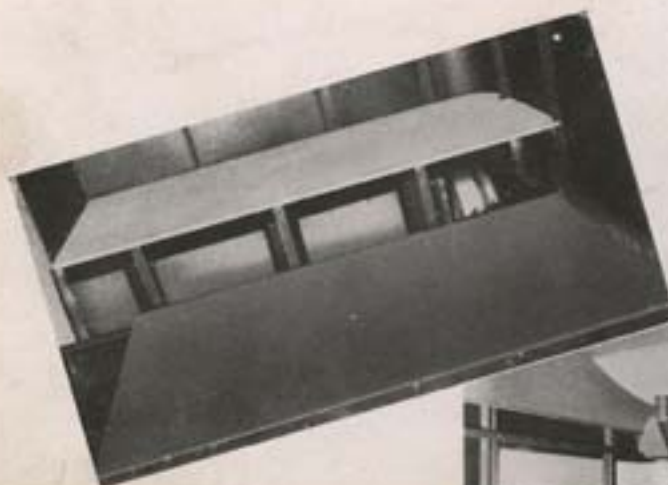
REAR VIEW OF PLANT  
*On Lackawanna Railroad*



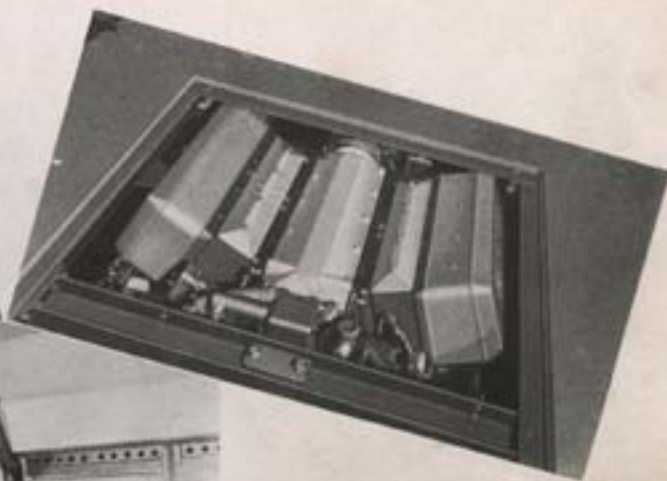
DYNAMOMETER SET-UP FOR TESTING POWERFUL 8-CYLINDER BROOKS ENGINE



EXPERIMENTAL DEPARTMENT



*Steam Generator located under rear seat*

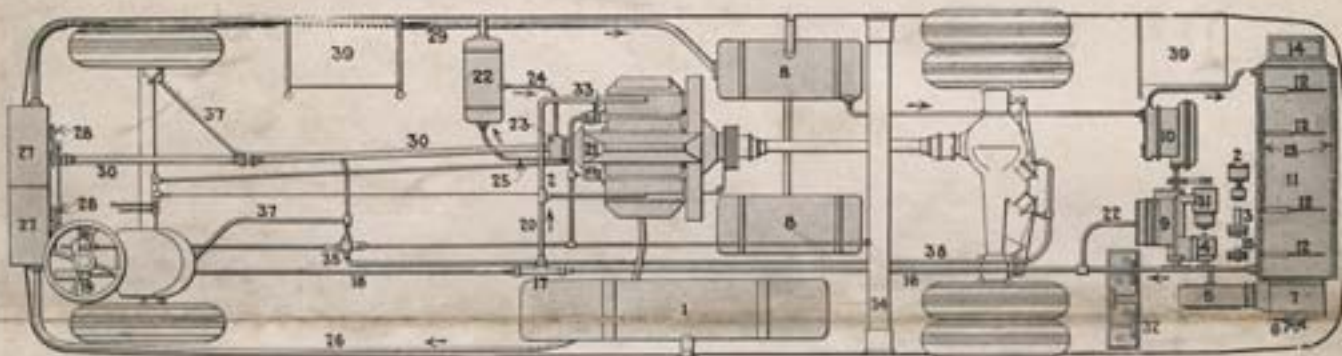


*Brooks Eight Cylinder Steam Engine*



*Showing foot throttle, etc.*

**INTERIOR VIEWS BROOKS STEAM BUS**



**DIAGRAMATIC LAYOUT OF BROOKS STEAM BUS**

**Fuel System**

- 1—Fuel tank.
- 2—Fuel pump and motor.
- 3—Fuel pressure regulator.
- 4—Burner fan motor.
- 5—Burner fan.
- 6—Ignition plugs and fuel nozzle.
- 7—Burner.

**Steam Generator and Steam Control**

- 8—Water tanks.
- 9—Pumps, engine.
- 10—Water pump.
- 11—Steam generator.
- 12—Temperature regulators.
- 13—Super-heater coils.

**Engine Lubricating System**

- 14—Flue.
- 15—Steam-pressure regulator.
- 16—Steam line to throttle.
- 17—Throttle.
- 18—Throttle control rod.
- 19—Throttle foot control.
- 20—Steam line to engine.
- 21—V-type single-acting eight-cylinder steam engine.

**Engine Lubricating System**

- 22—Oil tank.
- 23—Oil pump.
- 24—Oil suction pipe.
- 25—Oil return pipe.

**Steam Condensing System**

- 26—Exhaust line to condensers.

- 27—Condensers.
- 28—Condenser fans.
- 29—Water return to tanks.
- 30—Fan drive.

**Electrical System**

- 31—Electric generator.
- 32—Storage batteries.

**Braking System**

- 33—Air compressors.
- 34—Tubular cross member air tank.
- 35—Air control valve.
- 36—Air brake foot control.
- 37—Air line to front wheel brakes.
- 38—Air line to rear wheel brakes.
- 39—Air engine for door control.